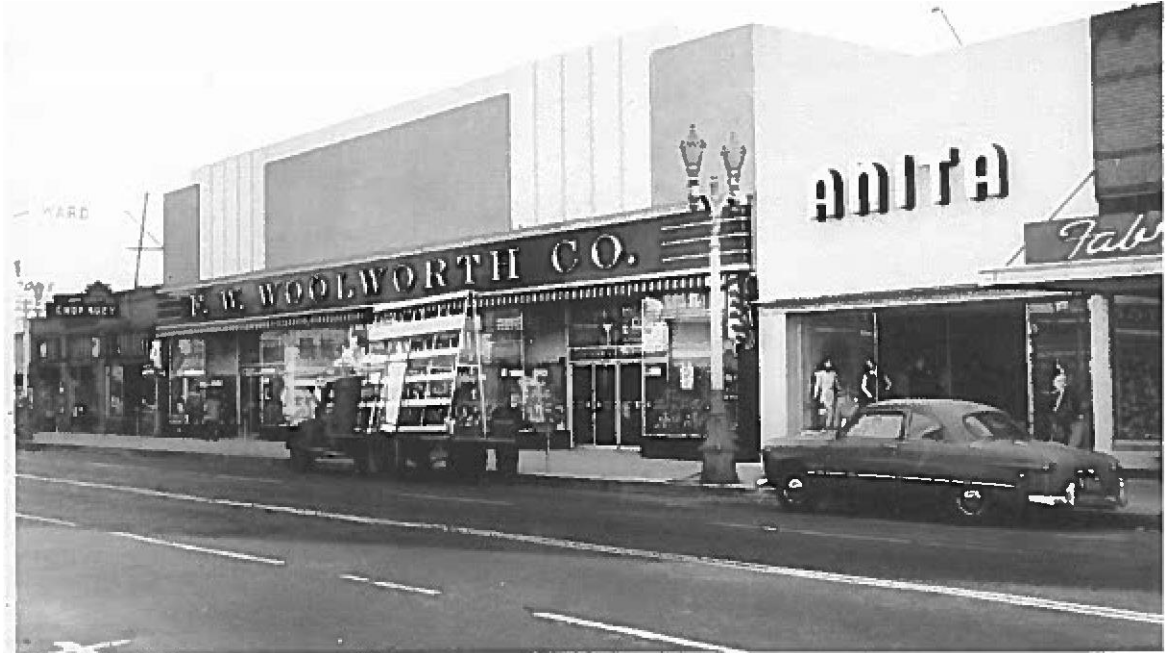


6. WOOLWORTH COMPANY SIGN  
1014 10<sup>TH</sup> Street (installed 1949)



**Landmark Preservation Commission Resolution:** October 16, 1989  
**Designated by City Council:** October 9, 1990

**Description:** The sign had a red enamel background with gold leaf letters.

**Historic Significance:** The original building was considered a model downtown Woolworth store and the sign was installed in 1949 to reflect the company's transition from the "five and dime" era. The sign was "lost" during the demolition of the Woolworth building in 1997-98. The building site is now part of the Tenth Street Place Renovation project.