



# City Beat

www.modestogov.com

(209) 577-5200 • TDD (209) 526-9211

DECEMBER 2014

## WATER CONSERVATION DURING THE WINTER

- **Insulate hot water pipes.** Cover indoor pipes with insulation, especially those on an outside facing wall or in unheated areas of your home. This will reduce the amount of water that must be run to get hot water from the faucet and avoid leaks from cold pipes. To be effective, insulate the full pipe including elbows and pipe tees.
- **Identify the water shut-off valve for your home.** Locate your master water shut-off valve and mark it for quick identification. If a pipe does burst, you'll be able to shut off the water flow quickly and minimize damage and water loss.
- **Disconnect and drain outdoor hoses.** Detaching a hose allows water to drain from the faucet. Otherwise, a single, hard overnight freeze can burst either the faucet or the pipe it's connected to.
- **Seal off access doors, air vents and cracks.** Winter winds whistling through overlooked openings can quickly freeze exposed water pipes.
- **Check for faucet and toilet leaks.** Even a tiny leak can cause a lot of water loss.
- **Add an aerator to your faucets.** You'll still get plenty of flow but use less water.
- **Keep the City of Modesto Water Hotline available in case of an emergency.** Pre-program it in your cell phone: Water Hotline - (209) 342-2246

For additional information please visit our website at [www.modestogov.com](http://www.modestogov.com)

## CHRISTMAS TREE COLLECTION BEGINS IN JANUARY

City of Modesto Green Waste crews will begin collection of **untreated** green Christmas trees as part of the normal Green Waste collection placed in the street/alley. For Christmas tree collection, the same guidelines apply as the Green Waste collected from the street/alley for your area. If you do not know which area you are in, please contact the City of Modesto Green Waste Office at 577-5463.

To ensure proper disposal of Christmas trees follow these simple steps:

### Disposal of Untreated Green Trees:

- Remove all tree stands, ornaments, rods, garland, and tinsel. If these items have not been removed the trees will not be picked up by City crews.
- Cut trees in half if they are more than six (6) feet tall.
- Place trees curbside to be collected with your regular yard trimmings or cut in pieces to fit in your green waste can.

### Disposal of Trees Treated With Flocking, Paint, or Fireproofing:

Trees with flocking, paint, or fireproofing cannot be composted and will **not** be collected by City crews. Flocked, painted, or fireproofed trees may be cut up and placed in your **black garbage can** or taken to one of the garbage company transfer stations. Transfer stations can be found at the following locations:



Gilton Solid Waste  
800 S. McClure Road, Modesto  
(209) 527-3781

Bertolotti Disposal  
231 Flamingo Drive, Modesto  
(209) 537-8000



For more information on Christmas tree collection or the City's Green Waste collection program; visit the City of Modesto's Website at [http://www.modestogov.com/prnd/trees/green\\_waste.asp](http://www.modestogov.com/prnd/trees/green_waste.asp) or contact the Green Waste Office at (209) 577-5463.

## \*\* IMPORTANT INFORMATION \*\* HOLIDAY GARBAGE COLLECTION SCHEDULE Christmas and New Year Holiday

There will be **NO** garbage collection on Thursday, December 25 & Thursday, January 1

During these two weeks:

- Thursday customers will be serviced on Friday
- Friday customers will be serviced on Saturday



## City of Modesto UTILITY BILLING Other ways to pay



Pay by Phone  
(209) 577-5395, Option 4



Pay Online at  
[www.modestogov.com](http://www.modestogov.com)



Pay using your  
Mobile Device  
**Check**  
Download the Check app TODAY!  
available on the Apple App Store  
or Google Play



Authorized Pay Station  
List of authorized pay stations  
available on back of bill.

## Keep Grass Clippings Out of the Gutters

Join the City of Modesto's Environmental Compliance and Stormwater Collections Sections in keeping grass clippings off the streets and out of the gutters.

Grass clippings and leaves blown into the road are unsightly and can:

- Endanger aquatic life
- Clog storm drains
- Increase maintenance costs for tax payers
- Cause flooding
- Lead to fines



The City of Modesto Municipal Code 5-10.103 and 4-7.1103 prohibits washing, sweeping or blowing vegetative debris into storm drains, ditches, waterbodies, sidewalks, roads, and gutters. Fines can be issued to those that are caught violating these codes.

When it rains, grass clippings and other vegetative debris are washed down our storm drains and into our stormwater collection system. If this material does not clog up the system, it often ends up in stormwater basins, creeks, or rivers where they start to decay. This process consumes oxygen in the water while releasing nutrients and it can lead to algae blooms and kill fish.

If you have any questions, please contact the City of Modesto Environmental Compliance Section 24/7 at 577-6200.

## Expanded Used Motor Oil Home Collection:

Modesto Residential Garbage Customers\*, if you are a "do-it-yourself" kind of person and you change your car's motor oil, you can have the motor oil and filter collected at your home for free. It's free and easy! The oil and filter will be collected on your garbage service day when you follow these simple steps:

1. Call your garbage company and schedule a collection appointment:  
Gilton Solid Waste 527-3781  
Bertolotti Disposal 537-8000
2. Pour the oil into a plastic container with a screw-top lid. Do not mix oil with other materials such as antifreeze, brake fluid, or gasoline.
3. Drain the oil filter into the plastic container and place the filter in a plastic zipper bag.\*\*
4. On your appointment day, place oil and filters out no later than 6 a.m. **SET THEM ON THE DRIVEWAY, NEAR THE HOUSE, AND NOT AT THE CURB.** Limit 4 gallons and 3 oil filters per week.

Do **NOT** mix your oil with any other substance such as antifreeze. Oil cannot be recycled if it is mixed with other substances. Contaminated oil must be taken to the Stanislaus County Household Hazardous Waste Facility at 1710 Morgan Rd, Fridays and Saturdays 9am – 1pm.

\*This program is only available to residential customers with a black and a green garbage container.

\*\*The City of Modesto has used oil containers and filter bags available to Modesto residents.

For more information, call the Recycle Used Oil Hotline at (209) 577-5493

## City of Modesto Waste Tire Recycling Events

### PROGRAM GUIDELINES:

- City of Modesto residents only
- No businesses
- Tires with and without rims - OK
- Car, Truck & Motorcycle Tires - OK
- Up to 9 tires accepted at no charge
- No Commercial or Tractor Tires

### WHAT TO DO:

- Call City of Modesto and request a Coupon: **(209) 577-5494**  
- Gilton Solid Waste (209) 527-3781  
- Bertolotti Disposal (209) 537-8000
- Take Tires to Garbage Company
- Do not mix tires with other waste

### FREE DISPOSAL ON DATES LISTED BELOW

**February 1-28** • **April 1-30** • **June 1-30**  
(Closed April 20)  
**August 1-31** • **October 1-31** • **December 1-31**  
(Closed Dec. 25)

Funded by a grant from the Department of Resources Recycling and Recovery (CalRecycle)

Questions?  
Call (209) 577-5494



SEWER PROBLEMS?  
CALL US FIRST  
577-6200

## REDUCE HOLIDAY WASTE

Holidays are a time for giving and sharing, and that creates a lot of extra waste!

A typical household generates approximately 45 pounds of trash per week. During the weeks between Thanksgiving and New Year's, each household produces about 15 additional pounds of trash. Almost all of this extra trash is not recyclable, or simply does not get recycled. Here are some ideas to help reduce waste and have fun while doing it:

- Gather and collect leaves, berries, pinecones, fruits and nuts from trees in your yard or neighborhood to decorate your home
- Buy a live tree that can be planted after the holiday, or use a smaller potted tree to re-use year after year
- Decorate your tree with special chocolates and candies, homemade ginger bread cookies, strings of popcorn, and ornaments made from flour or sugar
- Wrap gifts in something that can be used by the recipient: a bandana, scarf, towel or blanket
- Reload your empty gift cards and give them as gifts rather than tossing them out

These are some small and simple things that we can all do to help reduce waste, while reusing and recycling everyday items.

# MODESTO

REDUCING FLOODING & IMPROVING WATER QUALITY AT GARRISON PARK

The City of Modesto has just completed construction on a new stormwater system with chambers that can hold **2.2 million gallons of water** during a 100-year storm event. Stormwater first enters a pre-treatment device, gets filtered, and then percolates into the ground, recharging the aquifer at a rate of **7.7 million gallons per year!**



The previous stormwater system caused local streets to flood each time there was a significant rain event.



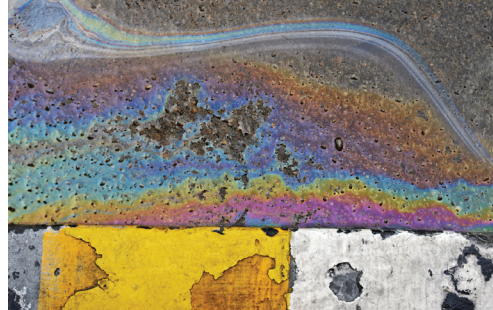
Pre-treatment device that filters stormwater

Taken during construction, this image shows the underground storm chambers, which sit more than 12 feet below the surface.



## WHAT IS STORMWATER RUN-OFF?

Stormwater run-off occurs when a rainfall flows over the ground. Impervious surfaces like driveways, sidewalks and streets prevent stormwater from naturally soaking into the ground.



## HOW DOES STORMWATER RUN-OFF GET DIRTY?

As stormwater flows over driveways, sidewalks and streets, it picks up dirt, debris, chemicals and other pollutants, which it can then carry into the storm drainage system or directly into local creeks and rivers.



## WHAT ARE THE EFFECTS OF STORMWATER POLLUTION?

- Bacteria can make swimming unsafe
- Debris can choke, suffocate or trap animals
- Hazardous wastes can make animals and people sick
- Sediment can cloud rivers and creeks affecting fish and plants
- Polluted stormwater can contaminate the drinking water supply

# WHAT'S UNDERNEATH GARRISON PARK?

OPENING JANUARY 2015



# HERE'S HOW YOU CAN HELP PREVENT STORMWATER POLLUTION!



## RECYCLE WASTE AT:

**The Household Hazardous Waste Collection Facility**  
1716 Morgan Road, Modesto  
(Friday and Saturdays 9am-1pm) **FREE OF CHARGE**

**Motor oil, filters and other automotive fluids**

### E-Waste

(TV's monitors, cell phones, printers, DVD players, phones, microwaves, radios)

**Lawn care products and pesticides**

**Batteries**

**Paint**

**Pool Chemicals**

## AUTOMOTIVE CARE

- Wash your car at a car wash which recycles its water
- Inspect and maintain your car regularly to prevent leaks
- Take motor oil and other fluids to an automotive center with a recycling program or to The Household Hazardous Waste Collection Facility



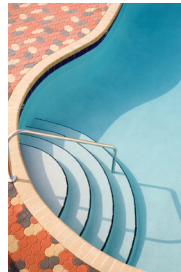
## HOUSEHOLD MAINTENANCE

- Try to avoid purchasing oil-based paint. Unused oil-based paint, paint thinner, varnishes and solvents are hazardous wastes and must be taken to **The Household Hazardous Waste Collection Facility**
- Water-based paint brushes should be rinsed out in the sink
- Oil-based and water-based paint cans can be disposed of in the garbage once they are empty and dry
- Sweep sidewalks and patios rather than hose debris into gutters



## LAWN AND GARDEN CARE

- Follow the City's year-round watering schedule
- Use pesticides and fertilizers sparingly
- Purchase house and garden products that are the least toxic



## SWIMMING POOLS AND SPAS

- Per Modesto Municipal Code, 5-10.201(f), you may never drain your swimming pool, hot tub, spa or fountain into the street or storm drain system
- Always drain into a sewer line through the clean-out located next to your house



## PET WASTE

**Dog feces contains fecal coliform bacteria which washes into local creeks and rivers, making them unsafe for swimming, fishing and boating.** Be a part of the solution:

- Remember to pick up pet waste and deposit in the garbage or flush down the toilet
- Be prepared: Carry a plastic bag when you walk your dog

**FIND OUT ABOUT COMMUNITY CLEAN-UP EVENTS!**



**CITY OF MODESTO:** [www.modestogov.com](http://www.modestogov.com)

**LOVE MODESTO:** [www.lovemodesto.com](http://www.lovemodesto.com)

**TUOLUMNE RIVER TRUST:** [www.tuolumne.org](http://www.tuolumne.org)

Funded by  
Proposition 84  
Stormwater Grant  
Program

