



Fact Sheet

Scenic Drive Phase II Pavement Rehabilitation Project (Downey Avenue to Lakewood Avenue)

Project Description:

Pavement rehabilitation on Scenic Drive from Downey Avenue to Lakewood Avenue. The length of the project is approximately 3.0 miles. Anticipated project improvements include roadway resurfacing and/or reconstruction, new signage and striping, ADA upgrades, and storm drainage system improvements. Excludes high friction treatment near the Modesto Pioneer Cemetery.

- Actual project limits are subject to change

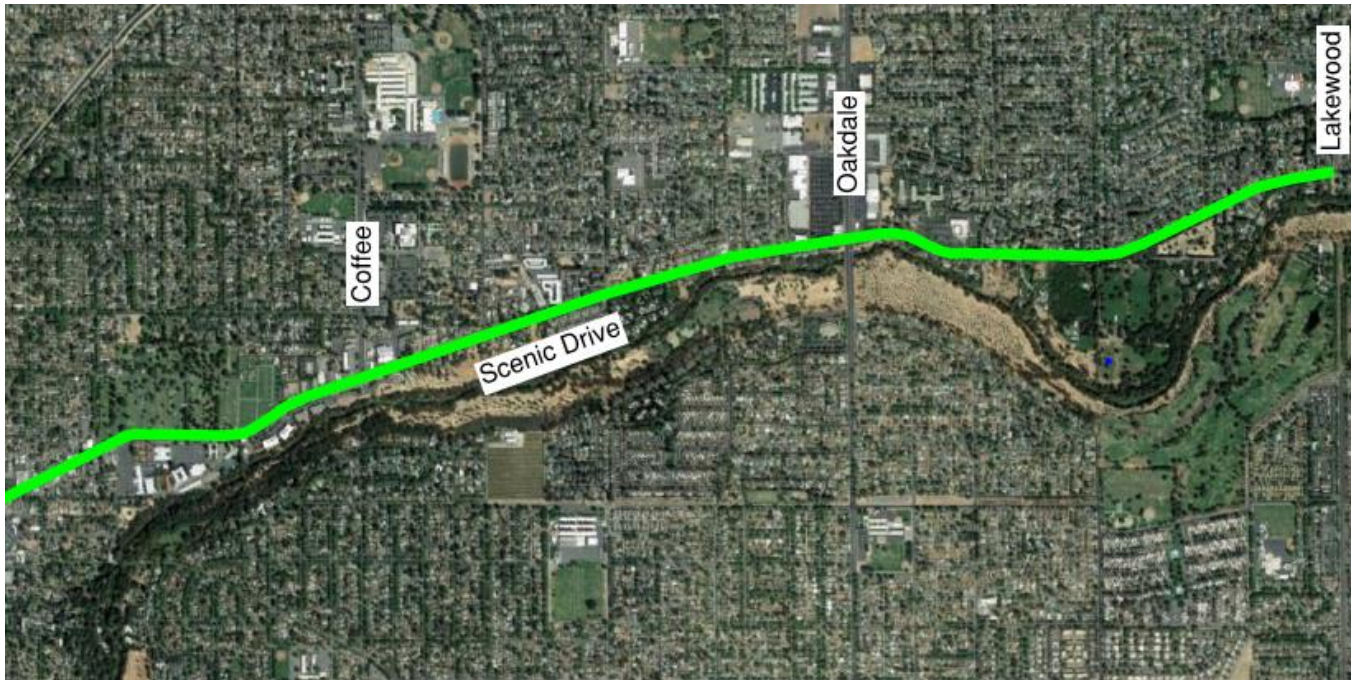
Funding Source:

Measure L Funds – Local Street & Roads (Fiscal Year 2019-20) - \$404,348

Measure L Funds – Local Street & Roads (Fiscal Year 2020-21) - \$2,695,652

Project Budget:

Engineering/Design/Administration	\$404,348
Construction (Total)	\$2,695,652
TOTAL	\$3,100,000



In accordance with the requirements of Title II of the Americans with Disabilities Act ("ADA") of 1990, the Fair Employment & Housing Act ("FEHA"), the Rehabilitation Act of 1973 (as amended), Government Code section 11135 and other applicable codes, the City of Modesto ("City") will not discriminate against individuals on the basis of disability in the City's services, programs, or activities. For more information, please visit the City of Modesto website at <https://www.modestogov.com/865/Americans-with-Disabilities-Act-ADA>