



Fact Sheet

Pelandale Neighborhood Pavement Maintenance Project

Project Description:

Pavement maintenance in the area bound by Dale Road, Bangs Avenue, Tully Road, Snyder Avenue. This project will maintain approximately 12.6 center line miles or 2,190,000 square feet of local roads, and 1.1 center line miles or 200,000 square feet of minor collector (Snyder Avenue). Anticipated improvements include slurry seal surface treatment and restriping, ADA upgrades to various locations.

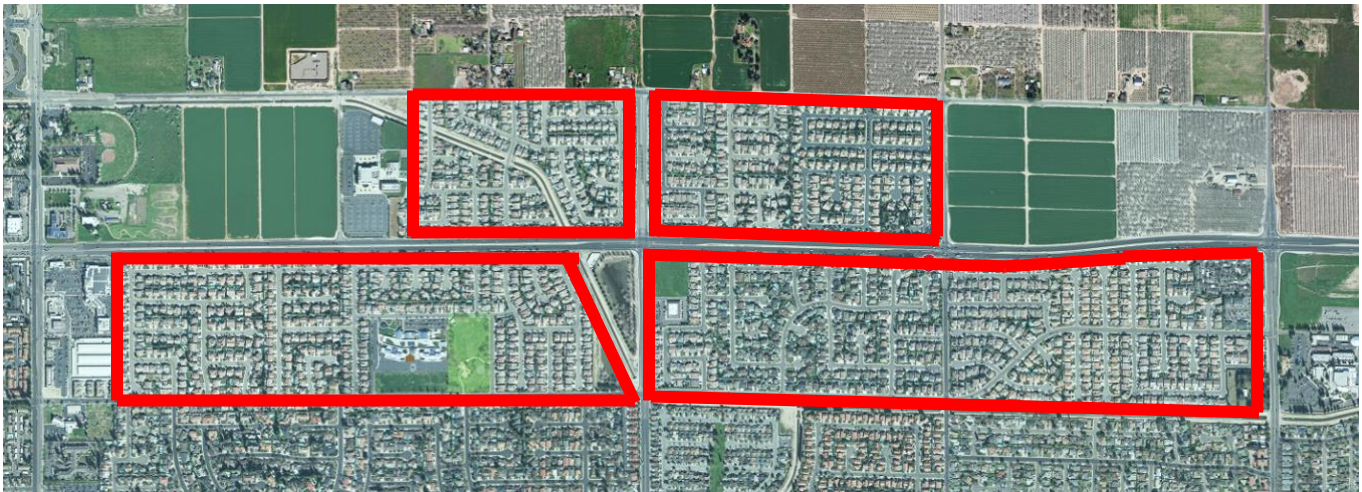
- Actual project limits are subject to change

Funding Source:

Measure L Funds – Local Street & Roads (Fiscal Year 2020-21) - \$2,271,250

Project Budget:

Engineering/Design/Administration	\$296,250
<u>Construction (Total)</u>	<u>\$1,975,000</u>
TOTAL	\$2,271,250



In accordance with the requirements of Title II of the Americans with Disabilities Act ("ADA") of 1990, the Fair Employment & Housing Act ("FEHA"), the Rehabilitation Act of 1973 (as amended), Government Code section 11135 and other applicable codes, the City of Modesto ("City") will not discriminate against individuals on the basis of disability in the City's services, programs, or activities. For more information, please visit the City of Modesto website at <https://www.modestogov.com/865/Americans-with-Disabilities-Act-ADA>