



### Handling Materials & Wastes

- Never clean brushes or rinse paint containers into a street, gutter or storm drain.
- Dry unwanted latex/water based paint outdoors either in the can or brush surplus paint on a cardboard box and allow to dry up before disposal. You can also add kitty litter to completely dry the paint out before disposal.
- Protect the City storm drain system- cover and protect storm drains.



### Disposal Options

- Recycle or dispose of excess water based paint at a household hazardous waste collection facility, or use the paint up.
- Empty paint cans can be disposed of in the trash once the paint has completely dried up.
- Use oil based paint completely. Dispose of any excess oil based paint as hazardous waste.
- Unused paint in unopened cans may be able to be returned to the paint vendor. Check with your vendor regarding its return policy.

### Recycling & Hazardous Waste Disposal

City of Modesto  
Solid Waste Management  
(209) 577-5494

Stanislaus County  
Household Hazardous Waste Facility  
(209) 525-4123



### To Report a Clogged Storm Drain, Spill or Illegal Dumping

City of Modesto  
Public Works Department  
(209) 577-6200

*This is one in a series of pamphlets describing storm drain protection measures. Other pamphlets include:*

- Automotive Maintenance & Car Care
- Equipment Rentals
- Food Service Industry
- Fresh Concrete and Mortar Application
- General Construction & Site Supervision
- Heavy Equipment & Earthmoving Activities
- Home Repair & Remodeling
- Horse Owners & Equine Industry
- Kennels
- Landscaping, Gardening, Pest Control
- Mobile Washers and Cleaners
- Nurseries
- Painting
- Roadwork and Paving
- Swimming Pool, Jacuzzi & Fountain Maintenance



For more information about storm drain protection or additional pamphlets, call:  
[www.modestogov.com](http://www.modestogov.com)  
City of Modesto  
Public Works Department  
Environmental Compliance Section  
(209) 577-6377

### Stormwater Best Management Practices (BMPs)



### Painters

Safe Environmental Habits and Procedures for:

Painters

Paper Hangers

Plasterers

Graphic Artists

Dry Wall Crews

Home Builders

Contractors



Environmental Compliance Section  
Public Works Department

## Water Pollution Prevention It's Up to Us!



Modesto has two drainage systems – the sewers and the storm drains. The storm drain system was designed to prevent flooding by carrying excess rainwater away from city streets and out to our rivers or into our rockwells and catch basins.

Urban runoff pollution is untreated and flows to our rivers and waterways through the storm drain system – 77 miles of storm lines and over 10,000 rockwells – that take water and debris straight from Modesto streets to our rivers and waterways.

Urban runoff pollution contaminates our rivers and waterways, harms aquatic life and increases the risk of flooding by clogging gutters and catch basins.

Using Best Management Practices (BMP's) ensures cleaner rivers and a cleaner city.

### ONLY RAIN DOWN THE DRAIN



## Painters

All paints, solvents and adhesives contain chemicals that are harmful to wildlife and humans. That is why proper handling and disposal of these products is so important.

Toxic chemicals from liquids, solid products and cleaning residues or rags may enter our waterways via the storm drain system.

It is especially important not to clean brushes in an area where paint residue can flow to a street, gutter or storm drain. Once paint, solvent or adhesives enter the storm drain system, they can flow directly to our river and waterways.



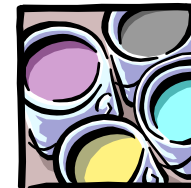
## Best Management Practices

- Keep all liquids, paint products and wastes away from the street, gutter and storm drains.
- Liquid residues from paints, solvents, thinners, glues and cleaning fluids are hazardous wastes and must be disposed of properly.
- Use water based paints if possible.
- Avoid using paint over 15 years old as this may have a toxic level of lead.
- Store products used for painting, solvents, adhesives, thinners and cleaners in closed containers. Keep in a dry location that will not be exposed to possible rain and runoff.



## Paint Removal

- Chemical paint stripping residue is a hazardous waste.
- Chips and dust from marine paints or paints containing lead or tributyl tin are hazardous wastes. Dry sweep the waste and dispose of as hazardous waste.
- When stripping or cleaning building exteriors using high pressure washers, block nearby storm drains to prevent runoff. Sampling of the waste wash water may be needed to determine the correct disposal. Refer to the Mobile Washers and Cleaners BMP brochure for information on how to dispose of wash water waste from pressure washing. Do not dispose of wash water in the storm drain system.



**Hazardous Waste Diversion Facility**  
**1716 Morgan Road/North Gate**  
**Modesto/Ceres**  
**525-4123**